

**LEGEND:**

**Magnetic Analytical Signal**  
nT/m

**SCALE:**

Scale 1:750  
metres  
OSGB 1936 / British National Grid

**NOTES:**

1. Surface coordinates relative to OSGB (1936)

**CLIENT:** ENI

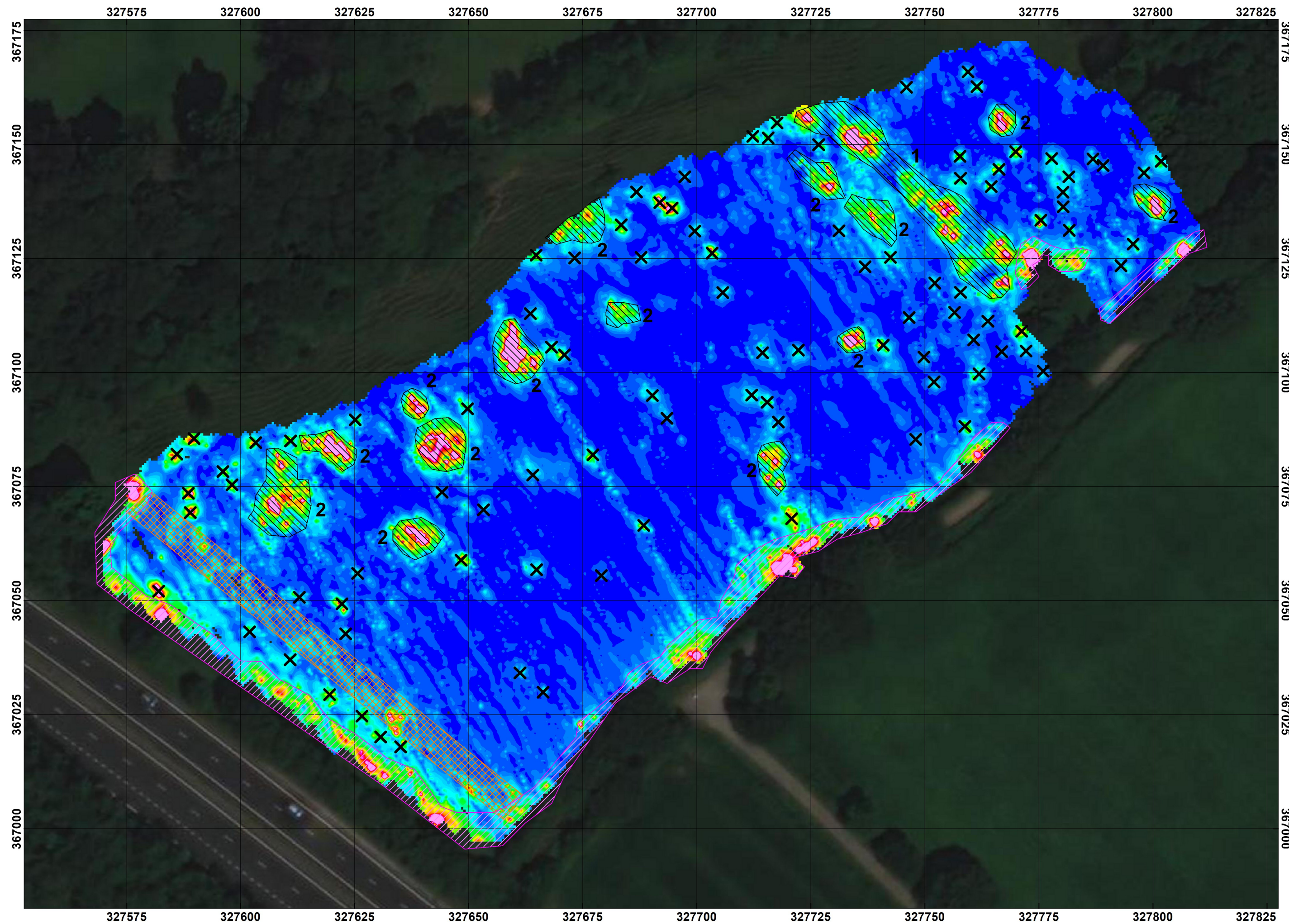
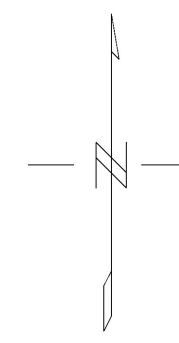
**PROJECT:** LBA CCS Transport and Storage Project  
Ground Investigations

**TITLE:** Magnetic Analytical Signal

PROJECT NO.: 190094	DRAWING NO.: 08		
ISSUE REFERENCE: 01	DATE: 22/02/2022		
INTERP. BY: EC	DATE: 22/02/2022	DRAWN BY: EC	DATE: 22/02/2022
CHECKED BY: DK	DATE: 22/02/2022	APPROVED BY: DK	DATE: 22/02/2022

DRAWING SCALE: 1:750  
PLOTTED DRAWING SIZE: A2 (594 x 420 mm)

FUGRO GEOSERVICES LIMITED  
Fugro House, Hithercroft Road  
Wallingford, Oxfordshire. OX10 9RB  
Tel: +44 (0)870 4021 400



**LEGEND:**

- Anomalies associated with power lines
- Anomalies associated with fences
- Unknown Anomaly
- Point Anomaly - Likely near surface debris

Magnetic Analytical Signal  
nT/m

**SCALE:**

Scale 1:750

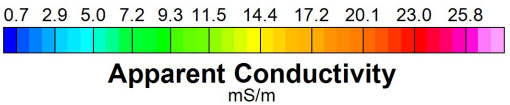
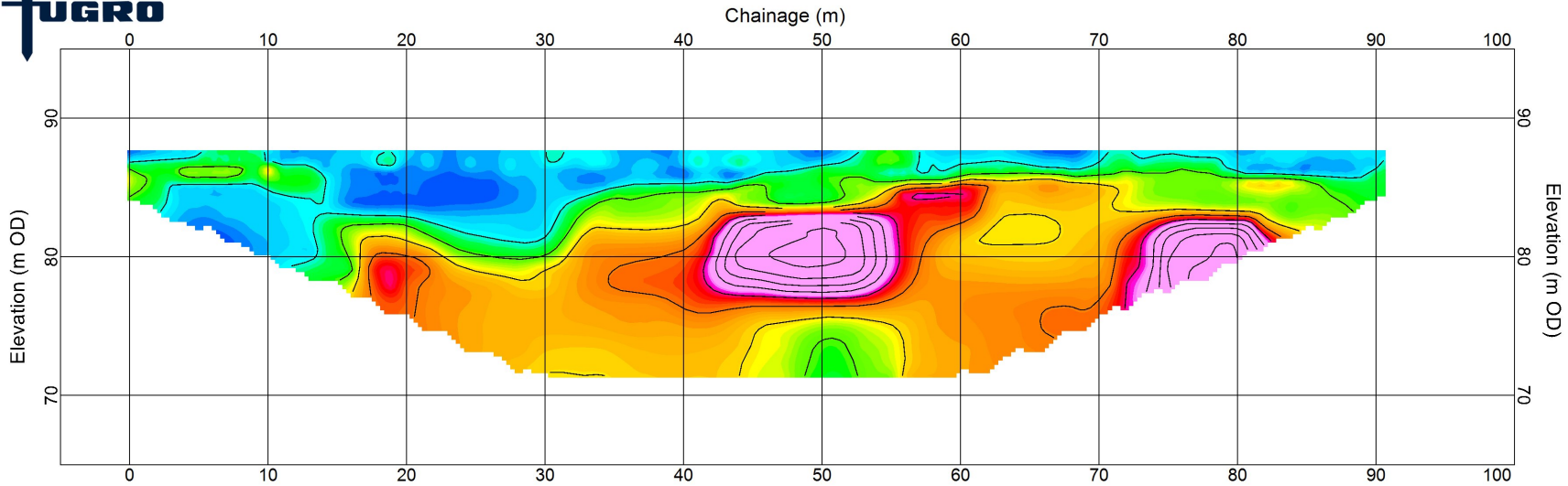
OSGB 1936 / British National Grid

**NOTES:**

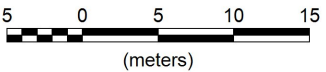
1. Surface coordinates relative to OSGB (1936)

<b>CLIENT:</b>			
ENI			
<b>PROJECT:</b>			
LBA CCS Transport and Storage Project Ground Investigations			
<b>TITLE:</b>			
Magnetic Analytical Signal Anomaly Interpretation			
PROJECT NO.:	190094	DRAWING NO.:	09
ISSUE REFERENCE:	01	DATE:	22/02/2022
INTERP. BY:	EC	DATE:	22/02/2022
DRAWN BY:	EC	DATE:	22/02/2022
CHECKED BY:	DK	DATE:	22/02/2022
APPROVED BY:	DK	DATE:	22/02/2022
DRAWING SCALE:		1:750	
PLOTTED DRAWING SIZE: A2 (594 x 420 mm)			
FUGRO GEOSERVICES LIMITED Fugro House, Hithercroft Road Wallingford, Oxfordshire, OX10 9RB Tel: +44 (0)870 4021 400			

1. Large linear cluster of anomalies - may be related to adit  
 2. Likely near surface anomalies - could be related to mining activities



### Northop Hall Mine Workings Conductivity Section

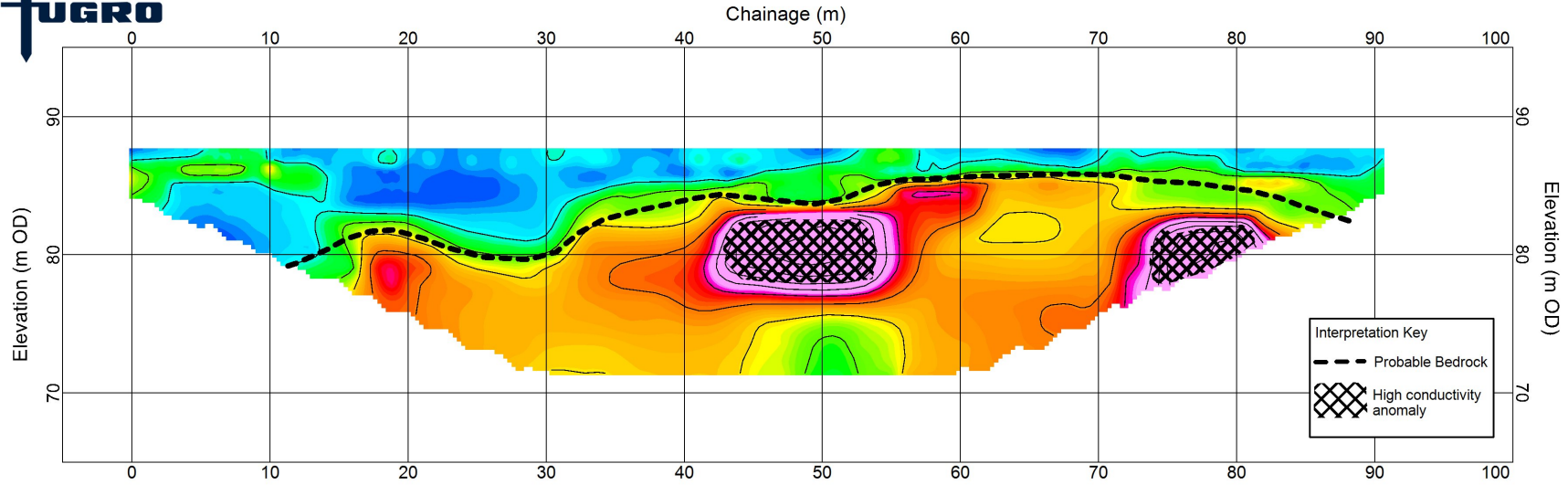


LBA CCS Transport and Storage Project Ground Investigation

Eni UK Limited

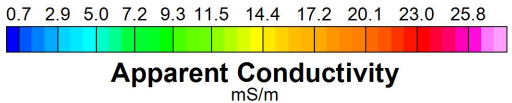
Line Coordinates		
Orient (N-S)	Easting	Northing
Start (0 m)	327814.7	367138.4
End (90.8 m)	327748.2	367076.4

Project No.:	190094	Drawing No.:	10
Issue Ref.:	01	Date:	22/02/2022
Inerp. By.:	EC	Drawn By.:	EC
Check By.:	DK	Approved By.:	DK



**Interpretation Key**

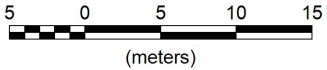
- Probable Bedrock
- ▣ High conductivity anomaly



**Northop Hall Mine Workings**  
Interpreted Conductivity Section

**Line Coordinates**

Orient (N-S)	Easting	Northing
Start (0 m)	327814.7	367138.4
End (90.8 m)	327748.2	367076.4



LBA CCS Transport and Storage Project Ground Investigation

Eni UK Limited

Project No.:	190094	Drawing No.:	11
Issue Ref.:	01	Date:	22/02/2022
Inerp. By.:	EC	Drawn By.:	EC
Check By.:	DK	Approved By.:	DK